

Santa Cruz City Schools



Owner: Santa Cruz City Schools
Architect: MADI Group



4777 E. Carpenter Road, Stockton, CA 95215
T. 209.466.8000 F. 209.461.6555 | enviroplex.com



High Performance Modular Buildings

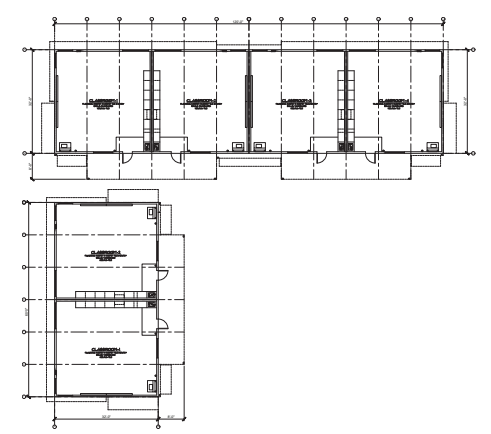
In November of 2016, Santa Cruz voters gave their local schools a much-needed infusion of financial support when they passed bond measures A and B earmarked specifically for facilities improvements and upgrades. Thanks to these bond measures Branciforte Small Schools, DeLaveaga Elementary School, and Bay View Elementary School – all three of which were between 50 and more than 100 years old – were set to undergo modernization efforts.

Bringing each campus up into the twenty-first century was not only long overdue, it was a critical necessity. To make each campus a fully integrated state-of-the-art learning environment, school staff and the local community were surveyed to put together what they saw as top priorities. Technology infrastructure upgrades, ADA improvements, campus security, parking considerations, and spacious buildings with updated lighting, finishes, and cabinetry were just some of the top priorities.

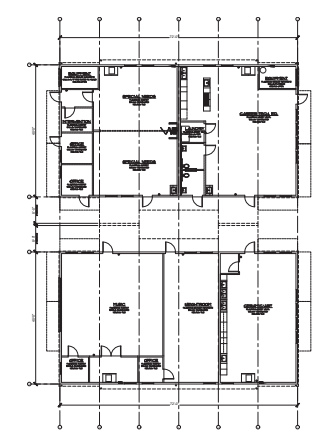
Partnering to Modernize

Once funding was in place, the Santa Cruz City School District enlisted Enviroplex and architects at MADi Group to help bring the project to fruition. The team at Enviroplex would provide project management and oversee the installation of modular buildings totaling 17,280 square feet and would include:

- Branciforte Small Schools: Two 72x40 modular classrooms
- DeLaveaga Elementary School: Two 72x40 modular classrooms
- Bay View Elementary: One 120x32 and one 60x32 modular classroom



Bay View Elementary School



Branciforte Small Schools

Total Square Footage – 17,280 sq ft

Construction and building installation was completed for all three schools August 5, 2019 and even included a ribbon-cutting ceremony at Bay View Elementary. The newly transformed campuses fully integrated the old with the new, offering students the upgrades and improvements needed to create a state-of-the-art, twenty-first century learning environment.

- Blend of shed roofs w/plant on fascia
- Steel suspended canopies
- Mix of 5' and 8' overhangs
- Three-coat stucco exterior w/tri-colored cement board lap siding
- Tubular skylights
- Custom glazing
- Interior, high efficiency HVAC
- Operable interior walls
- Extensive casework and plumbing

Owner: Santa Cruz City Schools
Architect: MADi Group

