

# Cherryland Elementary School



Owner: Hayward Unified School District  
Architect: Lionakis



4777 E. Carpenter Road, Stockton, CA 95215  
T. 209.466.8000 F. 209.461.6555 | [enviroplex.com](http://enviroplex.com)





Owner: Hayward Unified School District  
 Architect: Lionakis



Total Square Footage – 9,520 sq ft

## High Performance Modular Buildings

In 2014, Alameda county voters passed a \$229 million bond measure intended for building, modernizing, and upgrading local schools. One school that saw a complete overhaul was Cherryland Elementary School in Hayward, CA. In January 2018, construction began for the new campus on what was formerly the site of Sunset High School.

A number of goals were set in the redevelopment of the new Cherryland school. Hayward Unified School District prioritized fostering relationship-centered schools that focused on community and families and serving a full range of student needs. This included addressing those students who were unable to cross town in order to access specialized services such as dental care and therapy.

To realize this vision, the Hayward Unified School District partnered with Enviroplex and BHM Construction to create a community-focused, accessible learning environment spacious enough to accommodate up to 850 kindergarten through sixth-grade students.

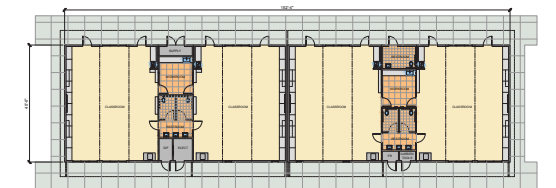
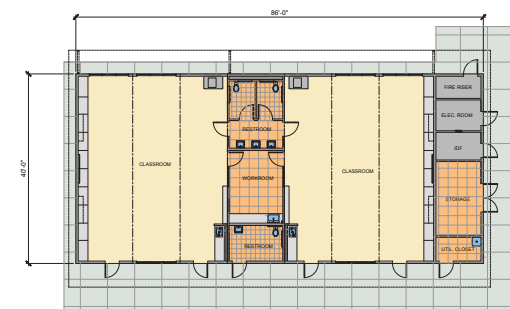
### Cherry on Top

In a nod to the school's name, outdoor walls and buildings are painted a vibrant cherry red. Integrating into the overall design concept, the Enviroplex kindergarten buildings work organically with the campus, contributing to an inspiring, collaborative learning space.



*"I'm impressed with the people the school district has brought in to manage and design the project. The taxpayers are getting their money's worth and more with the construction of Cherryland Elementary."*

Larry Ratto  
 Citizen's Bond Oversight Committee (CBOC), former principal of Sunset High School



Cherryland Elementary School

Enviroplex's scope included two kindergarten buildings that would complement the greater five-building campus including state-of-the-art features to enhance the learning environment:

- Two kindergarten buildings: 86 x 40 and 152 x 40
- Mix of 10 x 40 and 12 x 40 modules
- Concrete subfloors
- 10' ceiling height
- Shed roofs
- Restrooms
- Hot and cold plumbing
- Custom casework
- Interior ITEC HVAC
- Pre-engineered fire sprinkler system
- Three-coat stucco and Nichiha fiber cement siding exterior
- Oversized glazing