

# New Jerusalem School District



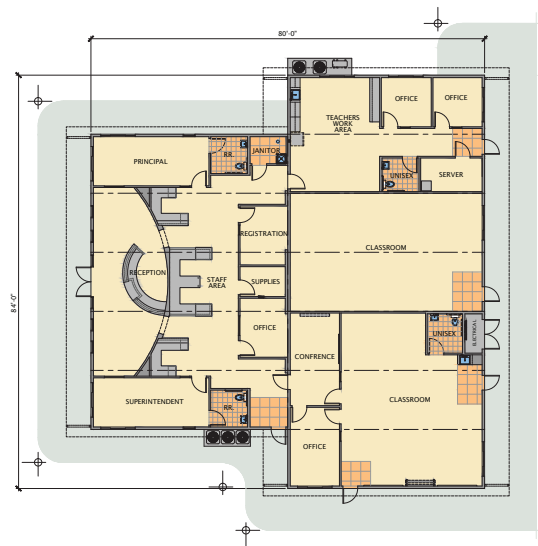
Owner: New Jerusalem School District  
Architect: Rainforth Grau Architects

ENVIROPLEX  
High Performance Modular Buildings



In 2012 the New Jerusalem School District needed new administrative space and Enviroplex delivered a 6,720 square foot mixed-use administration and classrooms modular building. Teamed with the District’s design professionals at Rainforth Grau Architects, the final product is an outstanding model for how modular construction and creative design can result in an attractive, cost effective facility.

The new building, an 84x80 back-to-back design with a staggered layout, boasts a 2:12 pitched roof with a Title 24 certified cool roof to minimize solar heat gain, 10' interior ceiling height, extensive glazing, and a custom curved wall at the reception area that spans three modules creating an inviting and welcoming space. The well-arranged interior is comprised of administration and dedicated staff offices, restroom facilities, a kitchenette and break room, classrooms for traditional curriculum, and IDF data and storage spaces. Complementing the interiors is an agrarian color palette of mixed natural tones.



New Jerusalem School District

Total Square Footage – 6,720 sq ft

### Key Building Features

- 84' x 80' back-to-back design
- 2:12 pitched roof
- 10' floor to ceiling height
- Recessed can lighting
- Store front doors and windows
- 3-coat Stucco exterior with thin brick veneer wainscot
- Custom casework
- Pre-engineered fire sprinkler system
- Fire rated walls between classrooms and offices
- Interior fire riser
- 600 amp system with one main panel and three sub panels

### Green Building Features

- Title 24 certified “Cool Roof”
- Kohler low-flow plumbing fixtures
- High efficiency HVAC – split system, attic mount
- Armstrong “Green Genie” ceiling tiles
- Low VOC adhesives, sealants, paint and coatings
- Low E dual-glazed windows
- Certified low VOC emission sheet vinyl in restrooms