

# Training Center Petaluma Child Development Center



Owner: United States Coast Guard  
Architect: Centerline Design LLC

ENVIROPLEX  
High Performance Modular Buildings



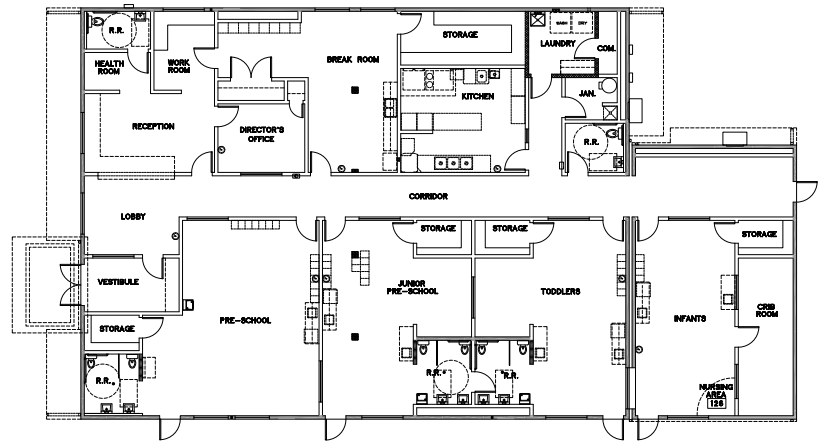
**Respect. Encouragement. Creativity. Individuality.**

Located at the United States Coast Guard’s Training Center Petaluma in the small, rural community of Two Rock, California, the new Child Development Center opened its doors in January 2011 and offers educational programs to the children of those preparing for careers in Coast Guard operations.

Built by Enviroplex in partnership with Coast Guard stakeholders and Centerline Design LLC, the new 5,760-square-foot back-to-back structure utilizes twelve 12' x 40' modules. Design features include oversized interior windows that allow for visual supervision and allow children to be aware of others and colorful VCT flooring in large, repeated patterns that de-emphasize the tunnel appearance of the long, double-loaded corridors. Standard MDO siding with a blue-and-white paint scheme complement the nearby base housing nestled in the surrounding wooded foothills.



The Child Development Center also features operable tubular skylights for natural lighting, a bright and welcoming reception area with custom casework, ADA restroom facilities with low-flow plumbing fixtures and a fully equipped kitchen with a stainless steel commercial vent hood and appliances.



Total Square Footage – 1,920 sq ft

Training Center Petaluma Child Development Center

**Key Building Features**

- Exterior awning windows
- Oversized interior windows
- Double-loaded corridors
- Custom casework
- Steel double-doors at entry with full-lite windows
- Operable tubular skylights
- Colorful custom-patterned VCT flooring
- 9-foot interior ceiling height
- Interior ADA-accessible drinking fountains
- Pinch-free hinges on all doors
- Fire sprinkler system
- Lighted exit signs
- Washable and durable wall finishes
- Back-to-back shed roofs for a bi-pitch roofing system
- Finished soffits