

Toyon Middle School



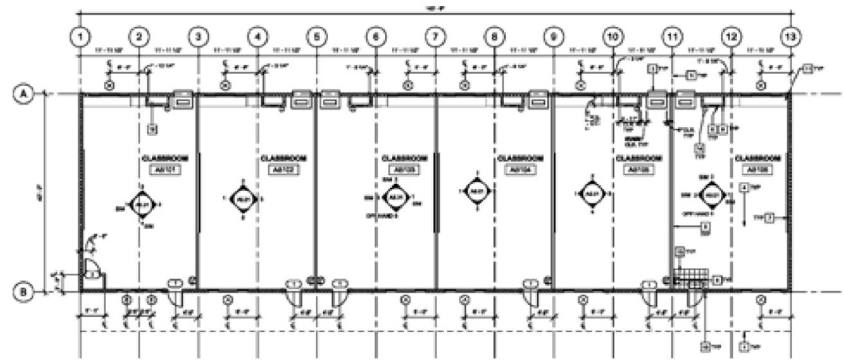
Owner: Calaveras Unified School District
Architect: California Design West

ENVIROPLEX
High Performance Modular Buildings



To accommodate growth and replace aging portable classrooms at Toyon Middle School, the Calaveras Unified School District called on Enviroplex to provide the campus with a new 11,520-square-foot modular classroom building that optimizes available space and resources.

Completed in June 2010, the 144' x 40' two-story rectangular facility is situated on a sloped site and boasts a sky-bridge that eliminates the need for an elevator for ADA-access compliance. By pairing an economic structure with a traditional aesthetic, an affordable design solution emerged that respects the existing campus structures and provides modern classroom spaces for those who will learn and work in them.



Toyon Middle School

Total Square Footage – 11,520 sq ft

Key Building Features

- Concrete sub-floors on both levels
- Cantilevered balconies with concrete fill
- Powder-coated railings
- 2:12 steep-pitched roof with Kynar custom panels
- Custom HardiePanel exterior lap siding
- Staircase assemblies with concrete fill
- Custom bridge assembly
- Interior HVAC units
- Energy-efficient lighting
- DSA-approved sprinkler system