

# Albert Schweitzer Elementary School

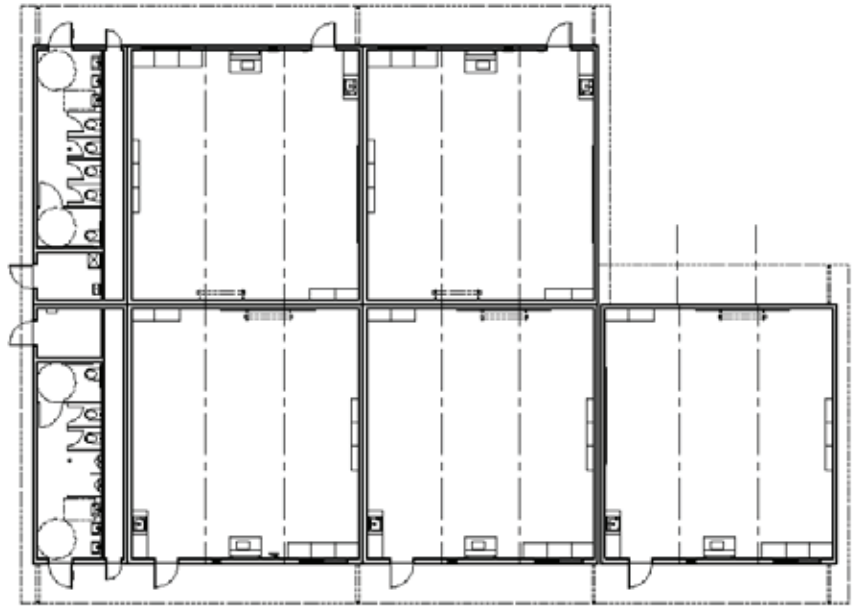


Owner: San Juan Unified School District  
Architect: Lionakis Beaumont Design Group  
Construction Management: Blach Construction

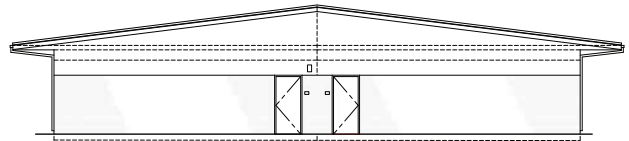
ENVIROPLEX  
High Performance Modular Buildings



San Juan Unified School District required a major facelift to the Albert Schweitzer ES campus calling for removal of portables, upgrades to classroom space and additional restroom capacity. **Core to their needs was a design that seamlessly integrated into the existing campus.** The Enviroplex Steep Pitch Modular Design satisfied every expectation with matching roof colors, thin brick veneer, District customization and on time installation for the August, 2008 school year.



Total Square Footage – 9,820  
 @ ~ \$174/ ft<sup>2</sup> veneer, District customization and on time installation for the 08/09 school year.



### Key Building Features

- 64' x 72' back to back cluster
- Back to back steep pitch roof design
- Floater classroom with matching bi-pitch slope
- Custom color PTFE coated roof pans
- Synthetic stucco/brick veneer mixed exterior
- Interior "Quiet Climate" heat pumps
- Electrical room with major panel upgrades
- (2) 12' x 40' restrooms with cast iron waste
- Ceramic tile RR walls
- Epoxy floors
- Dual valve "Green" plumbing fixtures
- Rat slab & concrete stem wall foundation
- 9 foot floor to ceiling classroom
- Operable security screens with interior release